

History of an Emblem: The Minnesota Wing Gremlin



Major Ace Browning
January 2025

Civil Air Patrol Shoulder Patches



1st National patch
~ February 13, 1942
(also with Cadet tab)



2nd National patch
~ July, 1942
(transitional red arc 1944-1945)



3rd National patch
~ November, 1944

Civil Air Patrol Shoulder Patches



Pennsylvania Wing ~ May 18, 1948
1st Official Wing Patch



The National patch was phased out December 31, 1954 and replaced by distinctive patches which all wings were mandated to incorporate. It wasn't until September, 1961 that CAPM 39-1 required the wear of a wing or region patch by all members. On December 1, 1978, a version of the national patch (above, right) was reinstated for overseas cadet squadrons.

Civil Air Patrol Shoulder Patches



An insignia designed by Walt Disney Studios featuring a feathered-wing airplane being guided by a gremlin was approved by National Headquarters, Civil Air Patrol as Minnesota Wing's distinctive shoulder patch on **April 4, 1950**...

But its origins go back to the early years of World War II!

Walt Disney Studios

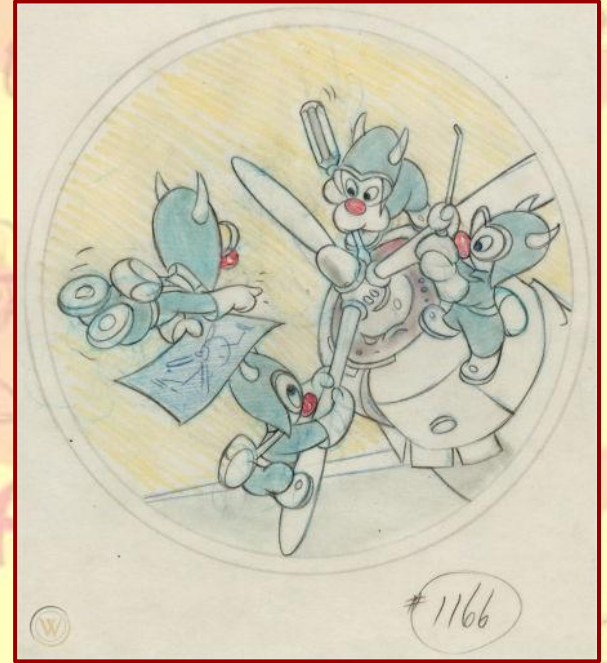
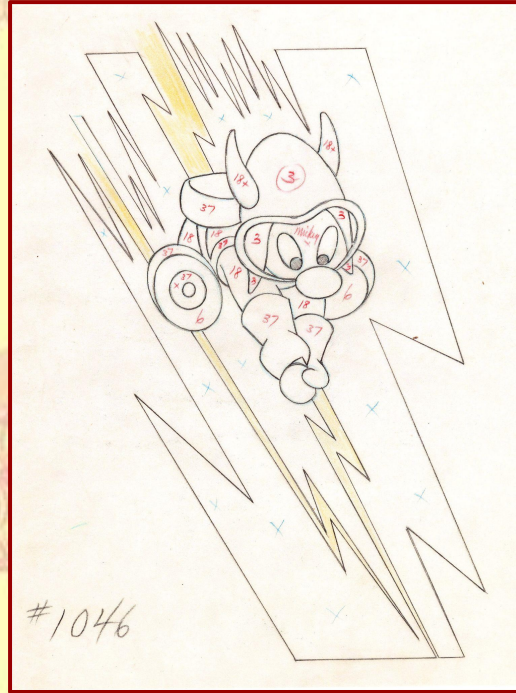


Flight 3, Newport Harbor, RI
~ 1945



As a major show of patriotism in 1942, Walt Disney assigned Hank Porter, a staff artist of the Disney Publicity Art Dept, the job of creating military insignia. Porter was responsible for creating many of Civil Air Patrol's WWII-era emblems. When he became overcome with insignia design requests, he called on fellow artists George Goepper, Van Kauffman, Ed Parks, Roy Williams, and Bill Justice to assist him.

Walt Disney Studios



Art by Hank Porter in colored pencil

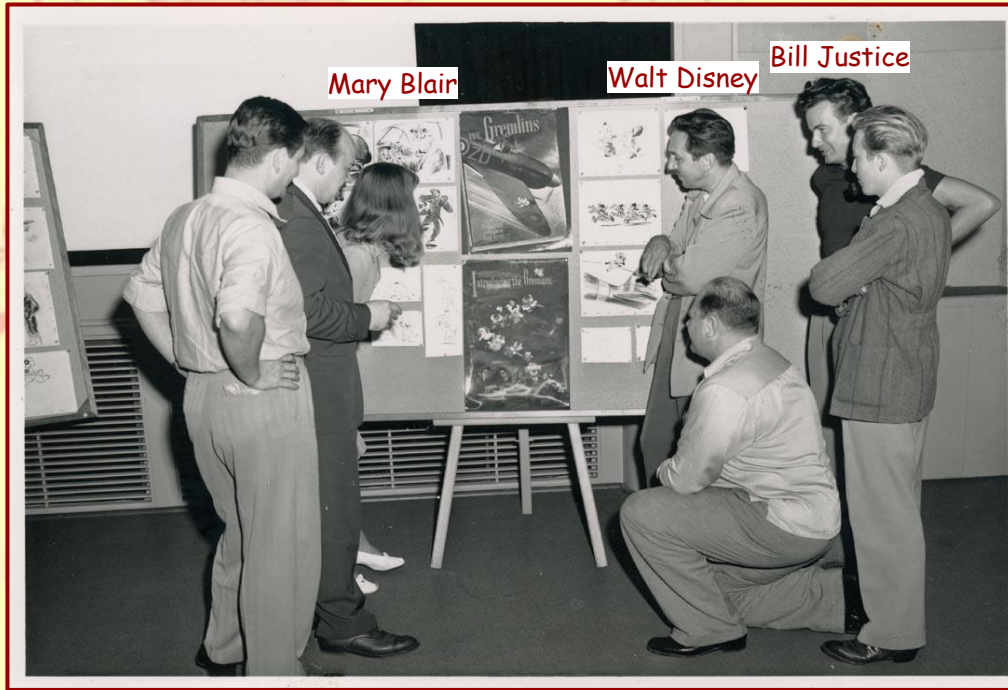
Walt Disney Studios



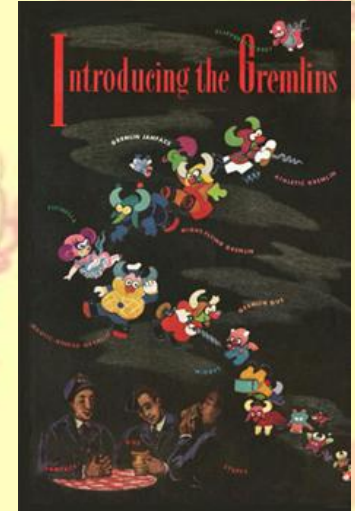
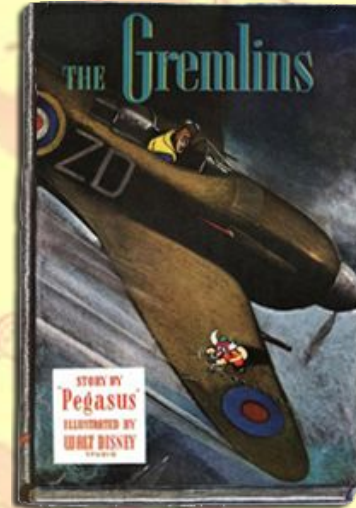
B-17F, 560th Bomb Squadron ~ 1943-1946



Walt Disney Studios



"The Gremlins" storyboard ~ 1942

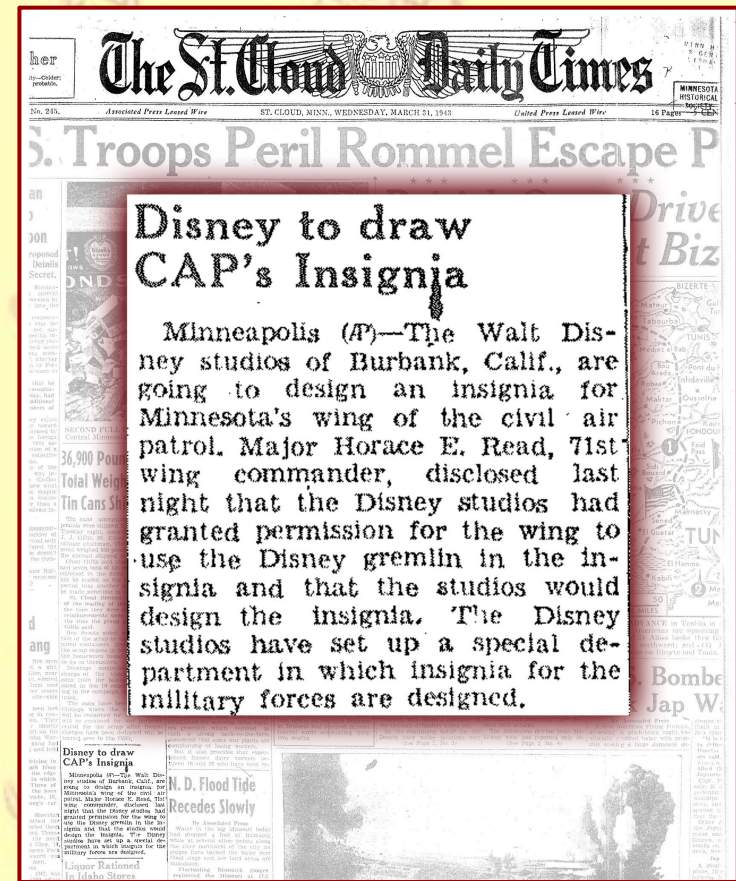


"The Gremlins" short story,
Cosmopolitan magazine
~December, 1942

Walt Disney Studios

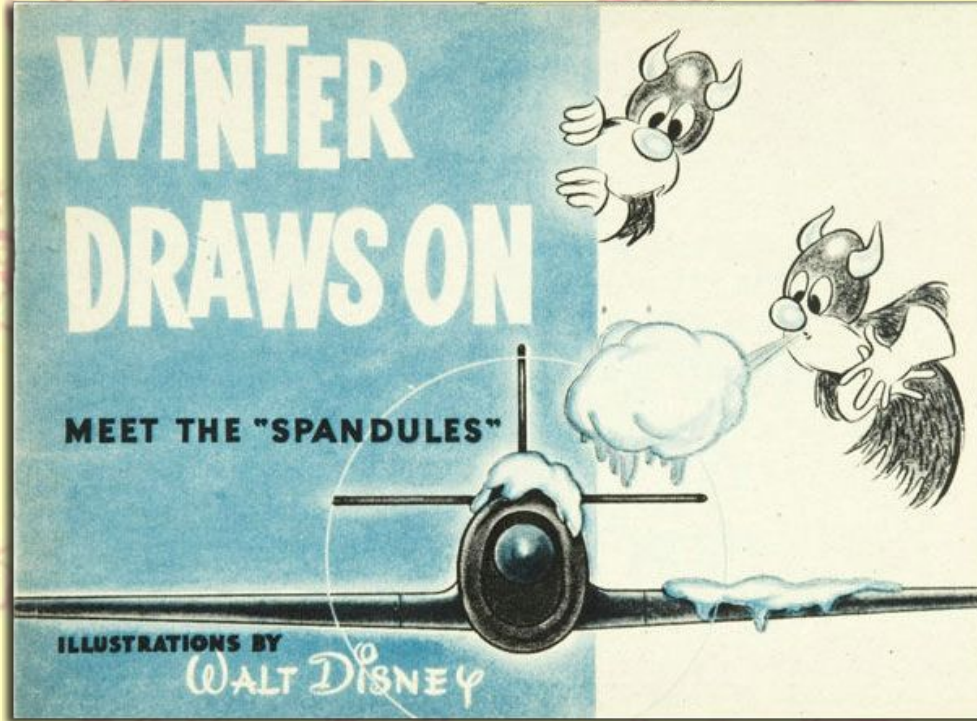


Gremlin concept art by Bill Justice
~ early 1943



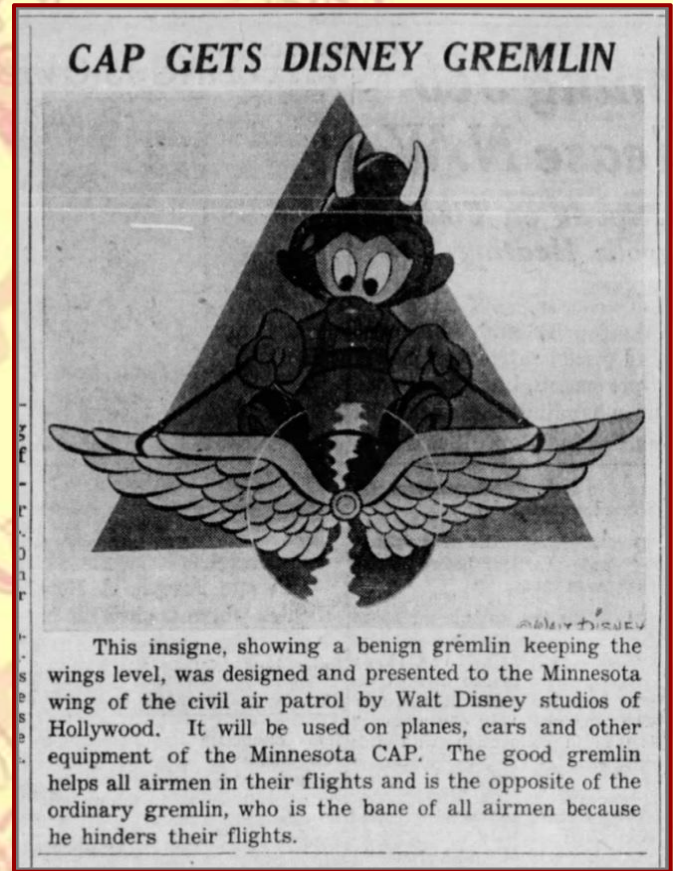
The St. Cloud Daily Times
~ March 31, 1943

Walt Disney Studios



Art by Bill Justice ~ June, 1943

(Safety Education Division, Flight Control Command, US Army Air Force)



Minneapolis Star Tribune
~ June 7, 1943

WALT DISNEY PRODUCTIONS

2400 WEST ALAMEDA AVE. • BUEENY, CALIFORNIA • CABLE ADDRESS: DISNEY

September 13, 1944

Major H. O. Fichte
716th Bombardment Squadron
447th Bombardment Group
APO 520, c/o Postmaster
New York, N. Y.

Dear Sir:

We are enclosing the insignia that we have designed for your squadron.

We are also enclosing proper license agreement in the form approved by the War Department, granting to the United States Government the exclusive use and the right to reproduce the copyrighted design of "Cartoonature of Drenlin reclining on bolt of lightning...." as an insignia.

It was a pleasure to create this insignia for you and we hope it will meet your approval.

Cordially,

W. R. Caldwell
W. R. Caldwell
PUBLIC RELATIONS

VC/jb

NO AGREEMENT WILL BE BINDING ON THIS CORPORATION UNLESS IN WRITING AND SIGNED BY AN OFFICER



© WALT DISNEY

716th Bombardment Squadron, USAAF ~ September 13, 1944

LICENSE

KNOWN ALL MEN BY THESE PRESENTS that the undersigned, WALT DISNEY PRODUCTIONS, a corporation, duly organized and existing under and by virtue of the laws of the State of California, and having its principal place of business at Burbank, California, for and in consideration of the sum of One Dollar (\$1.00), and other good and valuable consideration, receipt whereof is hereby acknowledged, does by these presents grant unto the United States Government, as represented by the Secretary of Defense, the exclusive and perpetual right and license to reproduce and use the following motif, device or design, including the copyright notice, "© Walt Disney Productions":

"Caricature of Mickey Mouse and Donald Duck riding on fuselage of plane. Donald is wearing battle cap and ear phones and is piloting plane. Mickey is riding behind him wearing battle cap and holding spy glass in right hand..."

a copy of which is depicted in the drawing attached hereto.

Said design is an unpublished artistic work made by the undersigned company's employees acting within the scope of their employment.

Dated at Burbank, California, the 23rd day of April, 1951.

ATTEST:


Asst. Secretary

Walt Disney Productions
by J. M. [Signature]
Chairman

STATE OF CALIFORNIA }
COUNTY OF LOS ANGELES } ss

On this 23 day of April, 1951, before me Dorothy E. Loecher residing therein, duly commissioned and sworn, personally appeared Donald A. Leasing known to me to be the Vice President of Corporation that executed the within instrument and acknowledged to me that such corporation executed the same.

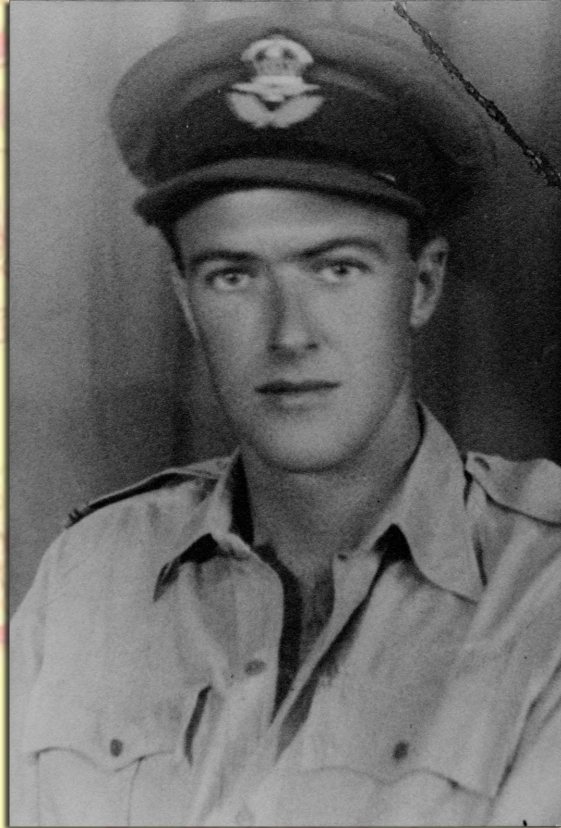
IN WITNESS WHEREOF I have hereunto set my hand and affixed my official seal the day and year in this certificate first above written.


Dorothy E. Loecher
Notary Public
My Commission Expires July 15, 1954



Licensed Disney Patch
~ April 23, 1951

Flight Lieutenant Roald Dahl (1916-1990)



Royal Air Force Fighter Pilot ~ 1939

World War II Flying Ace ~ 1941

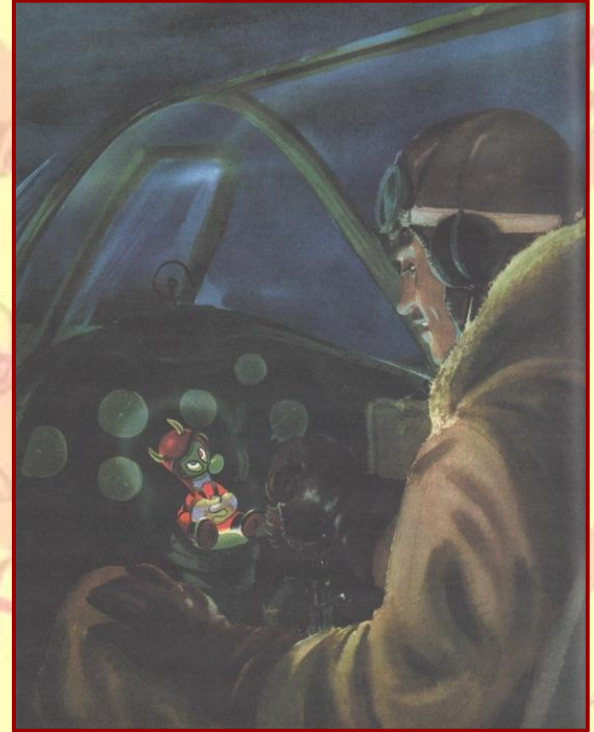
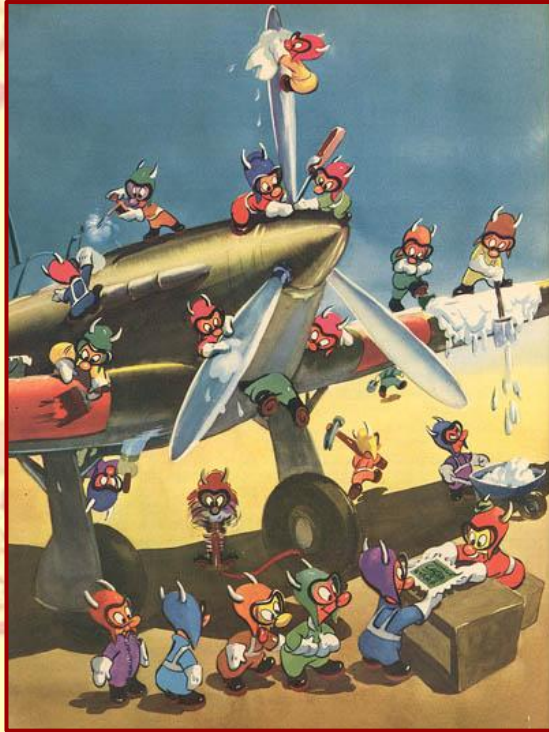
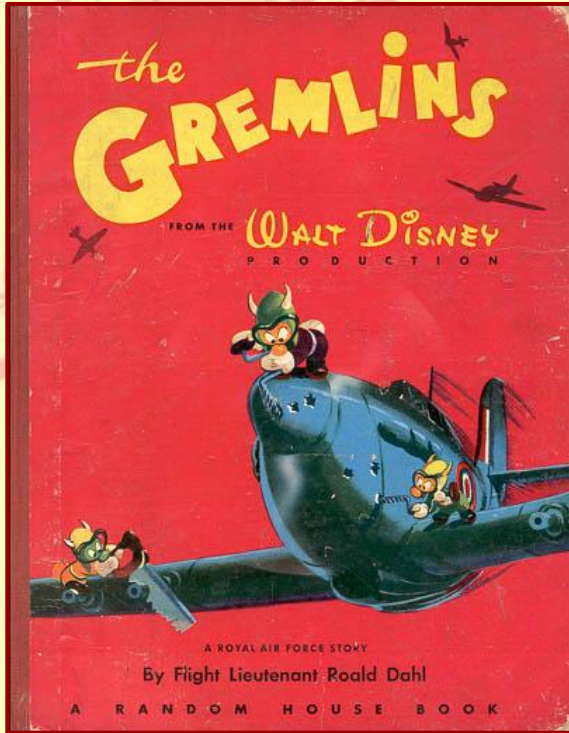
British Spy in the United States ~ 1942

Novelist, short-story writer, poet, screenwriter

- "The Gremlins" ~ 1942, 1943
- "James and the Giant Peach" ~ 1961 (1996 movie)
- "Charlie and the Chocolate Factory" ~ 1964 (1971, 2005 movie)
- "Matilda" ~ 1988 (1996 movie)

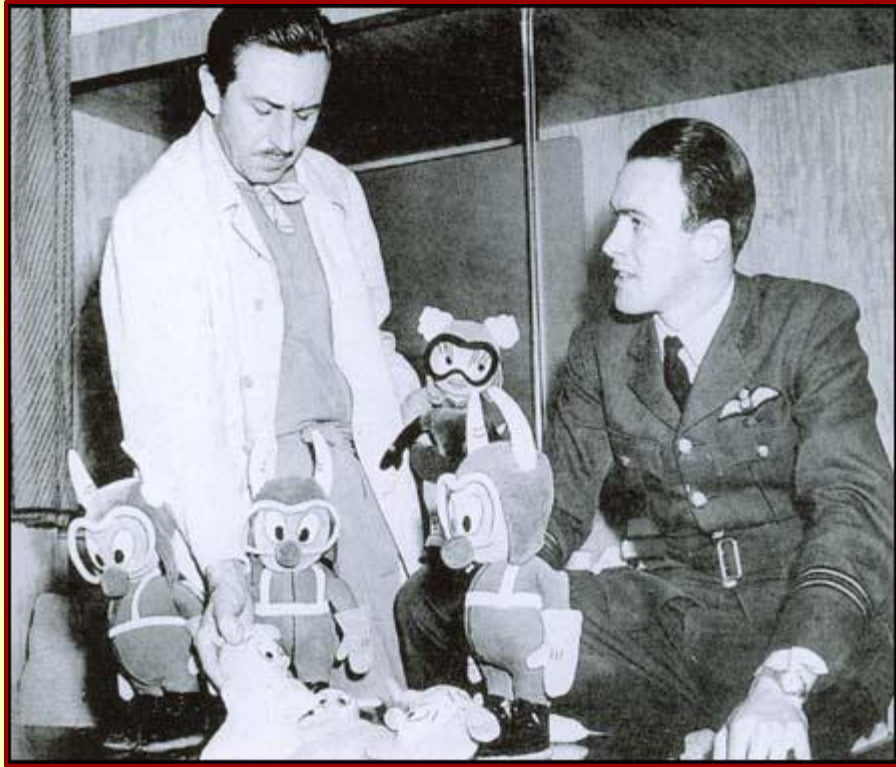
FUN FACT: Roald Dahl wrote the screenplay for "You Only Live Twice", the 1967 film starring Sean Connery that was loosely based on Ian Fleming's 1964 novel of the same name. It was the first James Bond film to discard most of Fleming's plot, using only a few characters and locations from the book as background for an entirely new story.

Disney's Gremlins



"The Gremlins" by Roald Dahl ~ April, 1943
Cover art by Mary Blair; interior art by Bill Justice and Al Dempster

Disney's Gremlins



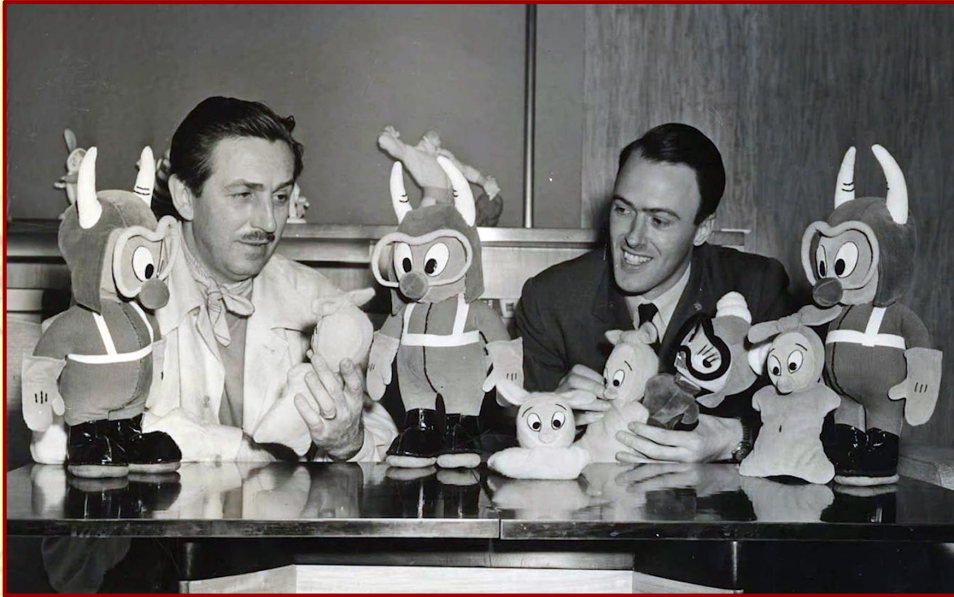
Walt Disney & Roald Dahl ~ 1943
(Plush dolls by Charlotte Clark)

Disney's Gremlins



Even with a film still in limbo, Disney marketed the Gremlins throughout 1943 with toys, comic books, and product tie-ins. As gremlin fever started to catch in America, the studio struggled to maintain the rights to their imagery. A competing studio, Warner Bros, even put out a cartoon short titled "Falling Hare" in October, 1943 which featured Bugs Bunny.

Disney's Gremlins



Going into 1944, an acceptable screen play had not been completed. Dahl was becoming displeased with how things were going, and England's Air Ministry was bugging Disney with concern how their beloved gremlins would be portrayed. Even though the studio had spent a good deal of time and money developing the project, Walt reluctantly halted production.

Minnesota Wing

MINNESOTA



G R E M L I N

©WALT DISNEY

OFFICIAL PUBLICATION OF MINNESOTA CIVIL AIR PATROL

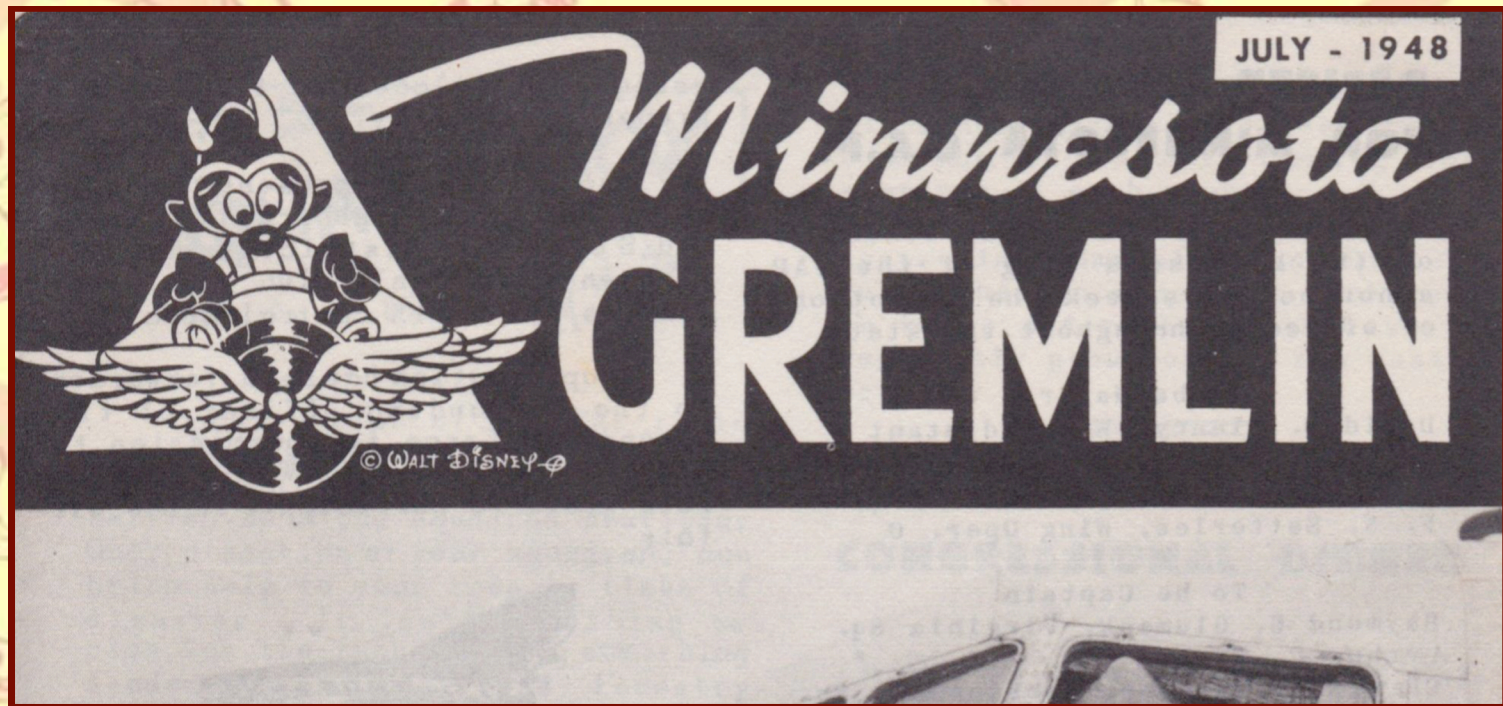
MAJOR CLAYTON N. WULFF, COMMANDER

VOL. I, NO. I

310 ARMORY, MINNEAPOLIS, MINNESOTA

MARCH, 1944

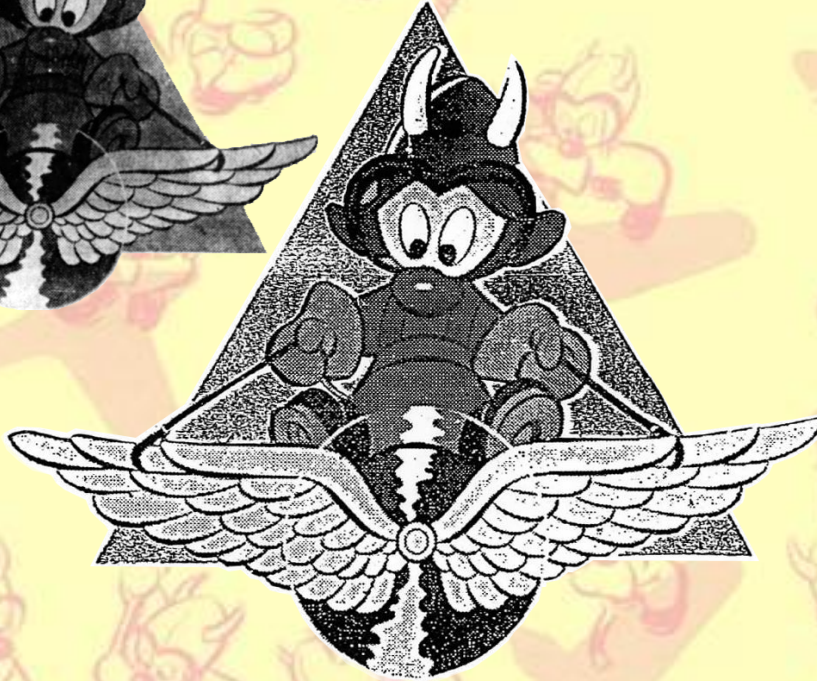
Minnesota Wing



Minnesota Wing



1943 Disney Artwork



1942 Pilot Wings



1949 Pilot Wings

Minnesota Wing Patches



Prior to the **April 4, 1950** authorization by National Headquarters, founding members were wearing unofficial hand-painting leather or canvas patches on flight jackets. The first embroidered patches had to be handmade to resemble Disney's detailed character as close as was possible. Every patch in the early years was custom and came out unique.

Minnesota Wing Patches



Once patches were produced in greater numbers during the late 1950s and early 1960s, they were also made by various manufacturers with varying details. Throughout the years, the Gremlin's features were transformed... Goggles became eyebrows, large eyes became piercing dots, boots turned into massive shoulders, and the nose and gloves disappeared.

Minnesota Wing Patches



Modern patches manufactured during the 1980s and 1990s looked nothing like the original Walt Disney Studios artwork. Members not knowing the Gremlin's history thought they were wearing a Minnesota Viking on their shoulder. Some members referred to our patch as the Samurai Cow! Version 1 was discontinued from use on **December 31, 2002**.

Minnesota Wing Patches

Minnesota Wingtips, August 1980

NEW Shoulder patches

In reference to the Deputy Commanders comments about the new Wing patches, here is more information:

The patch replaces the Minnesota Gopher Shoulder patch on Class A and B Uniforms, coats, blues, and blue epaulet long and short sleeve shirts. The old patch will continue to be worn for a while on fatigues, flight coveralls, jackets and so forth. All North Central Region States are changing to this arc-style patch. Your Wing Cmdr. approved this for Minnesota. The patches have been made up from a dye lot especially for Minnesota Wing. I have several hundred to sell and have been filling orders regularly. Order now and spread the word!

The patch is worn as before- 1/2 inch down centered on the left shoulder (be sure to remove the old patch since this is not an addition but a replacement)

To order follow these simple steps:

Number of patches	Total cost	plus postage
1	.55	.15
2	1.10	.15
3	1.65	.15
4	2.20	.15
5	2.75	.15
6	3.30	.15
7	3.85	.24
8	4.40	.24
9	4.95	.28
10	5.50	.28
11	6.05	.35
12	6.60	.35

Make check to: Shirley Quilling, 4400 North 4th Street, St. Louis Park, Minn. 55426
If ordering by phone call 612/938-5389

Lts Shirley Quilling

Note: Supplies and Uniforms can as always be ordered by any Senior Officer or Group Commanders.



Minnesota Wing Patches



Collector's Special Edition ~ 1997
200 copies made, first 100 with certificates



1st Cadet Training Group ~ 1999
Also used for 2nd, 3rd and 4th CTGs

Minnesota Wing Patches



Previous Version 2
~ Authorized April 14, 2001



Current Version 3
~ Authorized early-2023